

PACKED WITH EXPERTISE



SOFT TOUCH- EFFECT FOR LAMINATE TUBES

SOFT TOUCH-EFFECT FOR LAMINATE TUBES

Thanks to the latest manufacturing technology, laminate tubes combine the advantages of aluminum tubes and polyethylene tubes – the outstanding barrier properties of aluminum tubes meet the high-quality finishing options of polyethylene tubes. They are therefore particularly suitable for packaging in the cosmetics, pharmaceutical and food industries. A minimized weld seam supports the high-quality appearance of a laminate tube, which is also becoming increasingly popular with brand owners as a type of packaging.

**Our recommendation for
Laminate tubes**
GALACRYL® 89.501.14
UV-DualCure Softtouch

Laminate tubes with aluminium barrier (ABL)

An aluminum barrier is usually necessary when it comes to packages for aggressive filling goods. A laminate that contains a low aluminum content in addition to its plastic components is called an ABL (Aluminum Barrier Laminate).

Laminate tubes with EVOH-barrier (PBL)

A PBL laminate (Plastic Barrier Laminate) is an aluminum-free laminate made entirely of plastic. An additional EVOH barrier (ethylene vinyl alcohol copolymer) is added to the PE layers to protect the filling material. These tubes impress with their dimensional stability and good recyclability.



**Our portfolio
also includes effect
coatings for
extruded tubes.
Please do not hesitate
to contact us.**



PHYSICAL-TECHNICAL DATA

- Water-based
- DualCure* coating Softtouch for finishing printed products (*thermal drying followed by UV curing)
- Low migration, suitable for the exterior of food and other sensitive packaging, in compliance with legal regulations and guidelines (GMP)
- Solids content 35.5 %
- Flash point in degrees Celsius > 100 °C
- Viscosity DIN 4 23°C [SRAG 2V05] 49 - 71 s

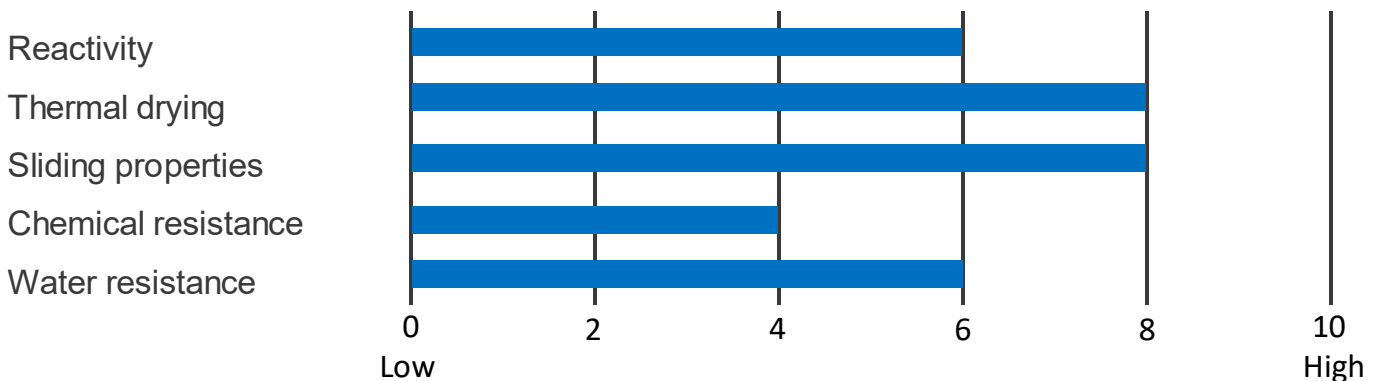
Advantages

For our customers:

- Implementation of high-quality brand owner designs
- Technical advice regarding optimal setting of application parameters
- No special/additional equipment necessary (processing on existing machines)
- Worldwide availability
- Long shelf life
- Wide range of application possibilities

For the consumer:

- High-quality packaging design
- Pleasant haptics due to soft touch-effect





SUSTAINABILITY

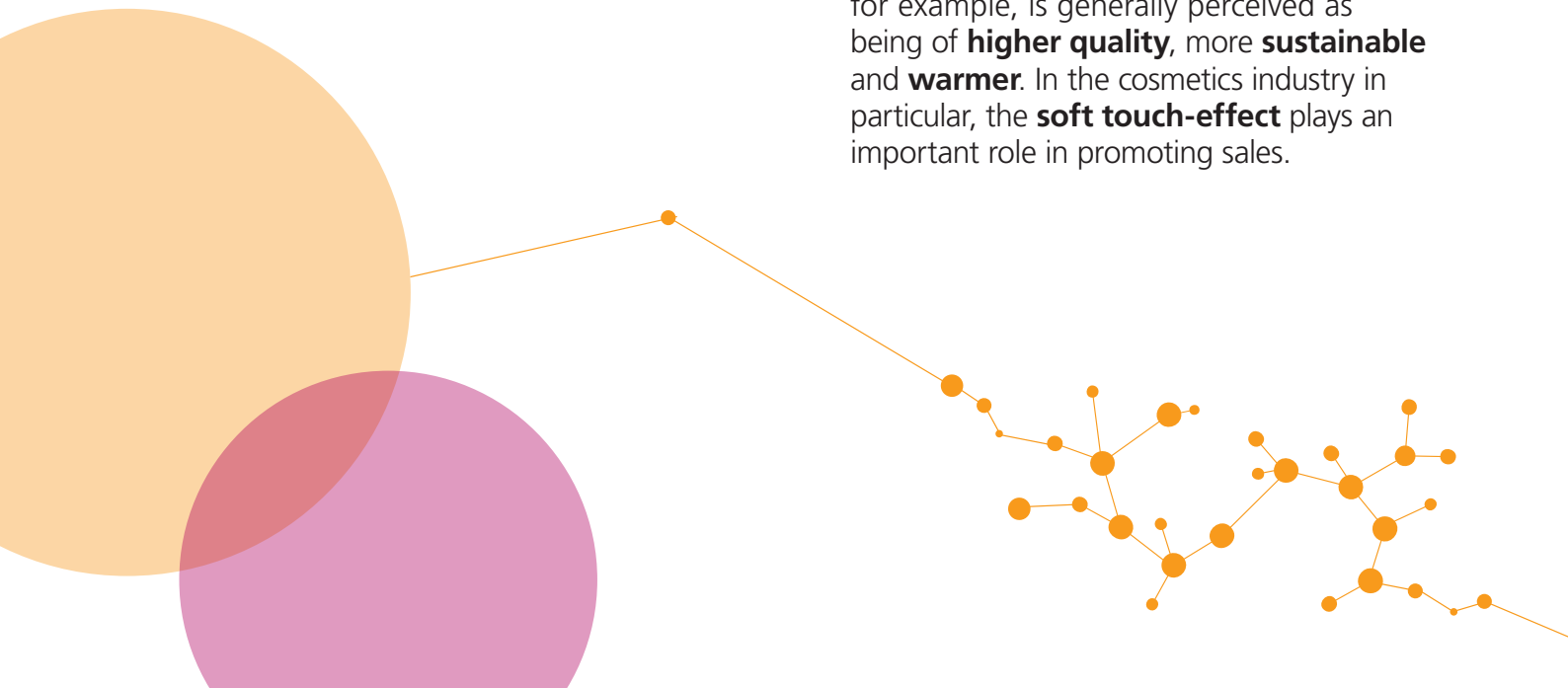
- The trend towards replacing conventional plastic packaging – especially for cosmetics – with laminate tubes reduces the amount of raw materials required for packaging and thus makes a significant contribution to reducing the carbon footprint.
- Unlike other packaging, tubes can be emptied almost completely. This facilitates environmentally sound recycling.

SOFT TOUCH

Packaging often makes the difference at the point of sale as to whether a product is purchased or not.

In recent years, multisensory brand communication has become increasingly important – a purely visual approach to the customer is sometimes not enough, depending on the product. The haptics of a product complement and reinforce the visual impression and help the customer to confirm his initial visual perception with the help of further sensory impressions.

Haptic effects give products a high-quality appearance and support the intuitive perception of certain product properties. Packaging with haptic effects, for example, is generally perceived as being of **higher quality**, more **sustainable** and **warmer**. In the cosmetics industry in particular, the **soft touch-effect** plays an important role in promoting sales.



PRINTING TECHNIQUES FOR THE FINISHING OF LAMINATE TUBES

FLEXO PRINTING / COMBINATION PRINTING

The possibilities for finishing tubes have been immensely expanded by flexo / combination printing technology. By using the basic colors CMYK, known from digital printing, as well as up to 4 additional spot colors, we are able to guarantee photorealistic print images as well as the color fastness of logos, fonts and symbols.

DIGITAL PRINT

By using the CMYK color space, we enable photo-realistic print images in digital printing without incurring printing plate costs. This is exactly what makes finishing tubes in digital printing so interesting, especially for small production volumes. Whereas conventional printing processes (flexographic, offset and screen printing) always require the production of individual printing plates for each printing ink used, digital printing does not require any plates at all. It is possible, for example, to distribute 20,000 tubes identical in size and shape over 4 different print images per (at least) 5,000 tubes

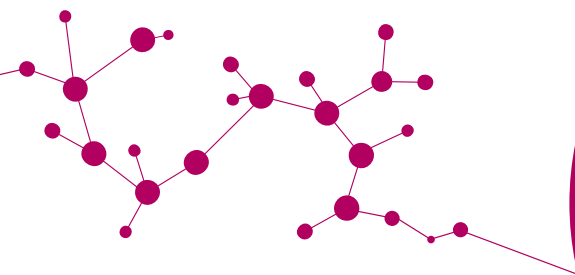
PARTIAL COATING / SPOT COATING

With partial coating, not the entire print image, but rather individual areas of the tube are selectively coated with a glossy or matte coating. In this way, we achieve visually and haptically effective print products that turn a tube into a real eye-catcher.



"Turn your tube surface into a haptic experience with our soft touch coating."

Srecko Stjepanovic
Head of Global Market
Management
Flexible Packaging



ACTEGA YOUR COMPETENT PARTNER FOR THE PACKAGING MARKET

Technical service and tailored advice

Selecting the perfect product from our wide-ranging portfolio of successful, tried-and-tested standard solutions

Joint development of a bespoke product solution
Considerable expertise in legal matters concerning food-stuffs

Extensive know-how when it comes to our customers' plants

Supporting new products at the customer plant
Laboratory analysis and trouble shooting on site

Production

Customer-specific order production

Small volumes also available

Research & development

Ultramodern laboratory equipment

High level of investment in R&D

Innovative, market-oriented product development

Quality control

Quality control using state-of-the-art testing equipment

Quality certificates for each individual batch

100 % traceability of raw materials, products, and deliveries

Integrated management system:

Quality management system

Environmental management system

Energy management system

Occupational health and safety management system



Copyright 2020 ACTEGA. All rights reserved.

The information and specification published in this document are given to the best of our knowledge and correspond with our current state of knowledge. All the information shall not create any guarantee of properties in the legal sense or representation with regard to characteristics and fitness for any particular purpose. The correctness, completeness and applicability of the information is subject to our explicit written confirmation in any particular case. Legally binding are only information set forth in the order confirmation and in the current technical datasheets. Product images may deviate, and do not warrant a certain appearance or function. We recommend testing our products as to their suitability for your envisaged purpose prior to use. Products, services, delivery terms and prices as well as the information contained in this document are subject to alteration without prior notice; the same is true for errors and omissions. The General Terms and Conditions of ACTEGA Rhenania shall apply exclusively, which you can find on our website or order confirmation.